

# ACCEPTED

**MUST BE EMPTY OF LIQUID AND FOOD WASTE**  
Cleaning agents or chemicals must be Triple Rinsed.



## CARDBOARD & CARTONS

Flattened cardboard, paperboard and food & beverage cartons.



## PAPER

Office paper, brown paper bags, newspaper, magazines and junk mail.



## PLASTIC CONTAINERS

Bottles, tubs and jugs under 5 gallons.  
Remove Caps.



## METAL CANS

Steel, tin and aluminum cans under 1 gallon.



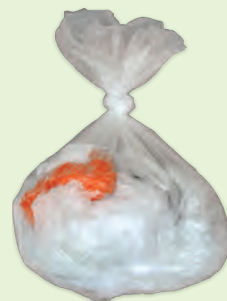
## GLASS CONTAINERS

Bottles and jars only.



## BAGGED SHREDDED PAPER

Bagged separately in "tough" clear bag and knotted shut. 80 lb strength bags suggested.



## BAGGED PLASTIC BAGS & WRAP

Bagged separately in "tough" clear bag and knotted shut. 80 lb strength bags suggested.  
*See back for details.*

# NOT ACCEPTED

DISPOSAL OF NON ACCEPTED ITEMS?



## NO MEDICAL WASTE

New or Used Supplies & Waste:  
Check with your city for proper medical waste disposal programs.



## NO SCRAP METAL, WOOD OR RUBBER

Rebar, Car Parts, Silverware, Tires, etc:  
Check with your city for alternate recycling options.

# NO

- Appliances
- Construction Materials
- Demolition Materials
- Organic, Food & Yard Waste
- Any Liquid
- Napkins & Paper Towels
- Styrofoam (Polystyrene)
- Clamshell & To-Go Containers
- Waxed Paper
- Stickers or Label Paper
- Laminated Paper
- Photographs or X-Rays
- Foil Chip Bags
- Candy Wrappers
- "Stringy" Items & Cords
- Strapping or Banding
- Scrap Wood
- Toys or Furniture
- Clothing or Fabric
- Tires & Rubber
- Car Parts
- Window & Auto Glass
- Glass Cookware
- Porcelain & Ceramics
- Mirrors



## NO HAZARDOUS WASTE

Batteries, Oil, Paint, Antifreeze, etc:  
Check with your city for proper hazardous waste disposal options.



## NO ELECTRONIC WASTE

Ewaste, Bulbs, Cords, Toner, Tapes, etc:  
Use a certified e-recycler like SEAM.  
([www.SeamServices.com](http://www.SeamServices.com))

## NON SINGLE STREAM RECYCLABLES

Items not listed or large quantities may be accepted outside of the Single Stream.

**Contact us for help.**

